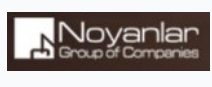


Olea Cyprus residential complex

Location **Famagusta, Geçitkale**



About the project



Developer	Noyanlar
Start of sale	01.06.2023
Key handover	2026
Houses/blocks	24
Building floor	5 Min 8 Max
Units total	136 - 1+1, 320 - 2+1, 196 - 3+1

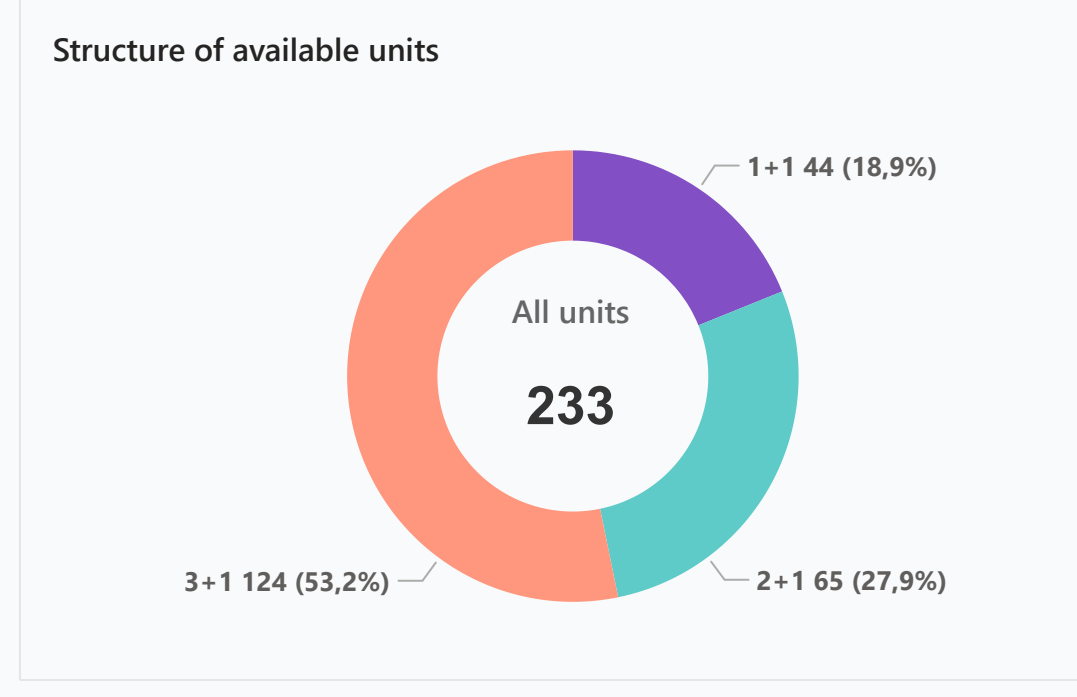
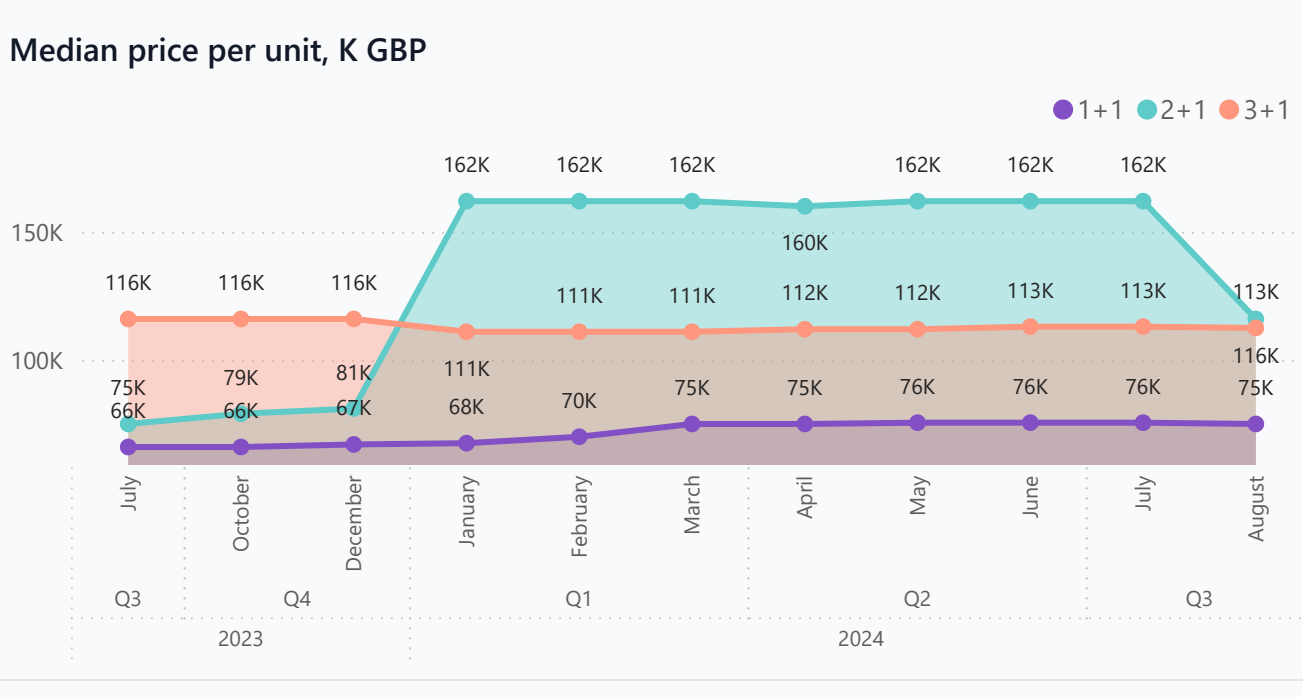
Distance to the sea - 15000 m
 Distance to key locations:
 10 km by car to Famagusta, 5 km to Salamis Ancient City, 25 km to Ercan Airport, 30 km to Nicosia, 45 km to Larnaca Airport and only 5 km walking distance to Long Beach

In the heart of nature - this is the slogan of the Olea Residence project of one of the largest developers in Northern Cyprus, Noyanlar. The Olea project awaits those who love tranquility and nature.

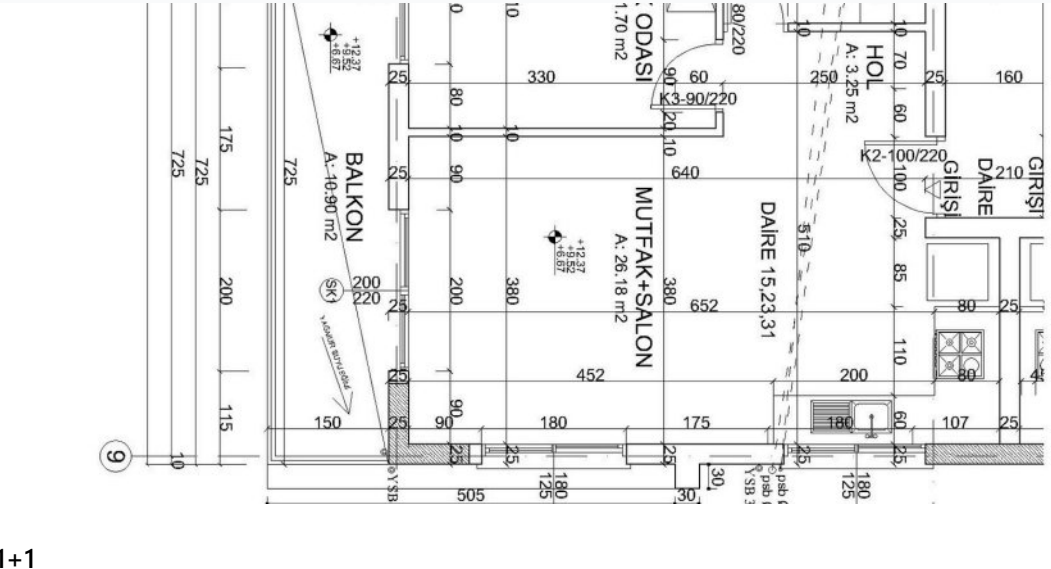
Complex infrastructure

- Bar
- Beauty salon
- Café
- Closed territory
- Fitness centre
- Indoor pool
- Kid's pool
- Open pool
- Parking
- Pharmacy
- Restaurant
- Supermarket
- Tennis court

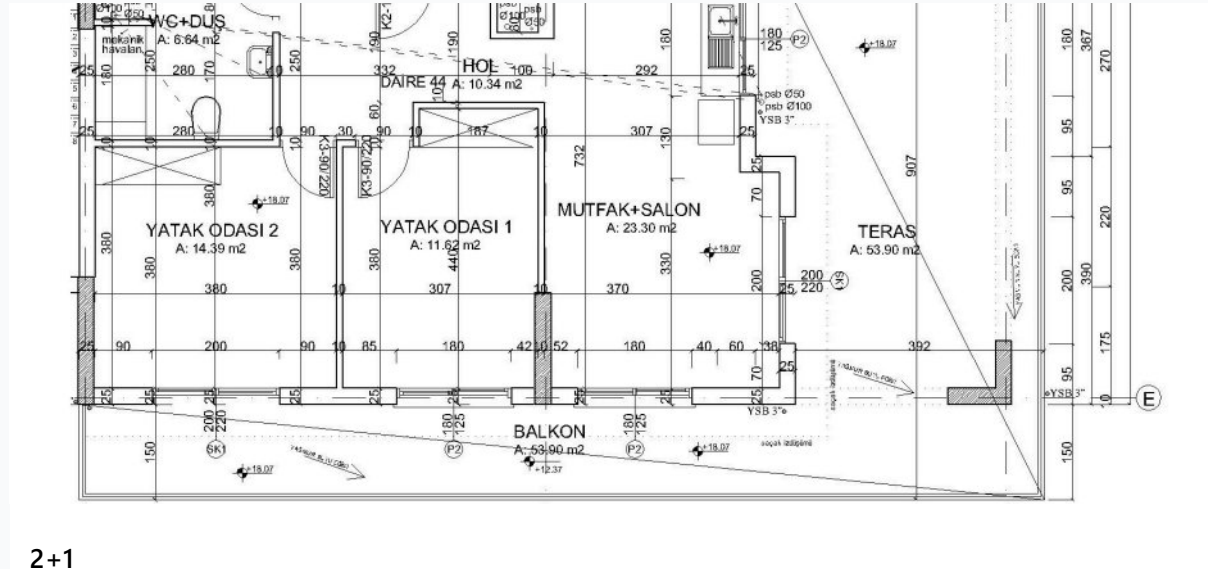
Available units 233 / 652 total



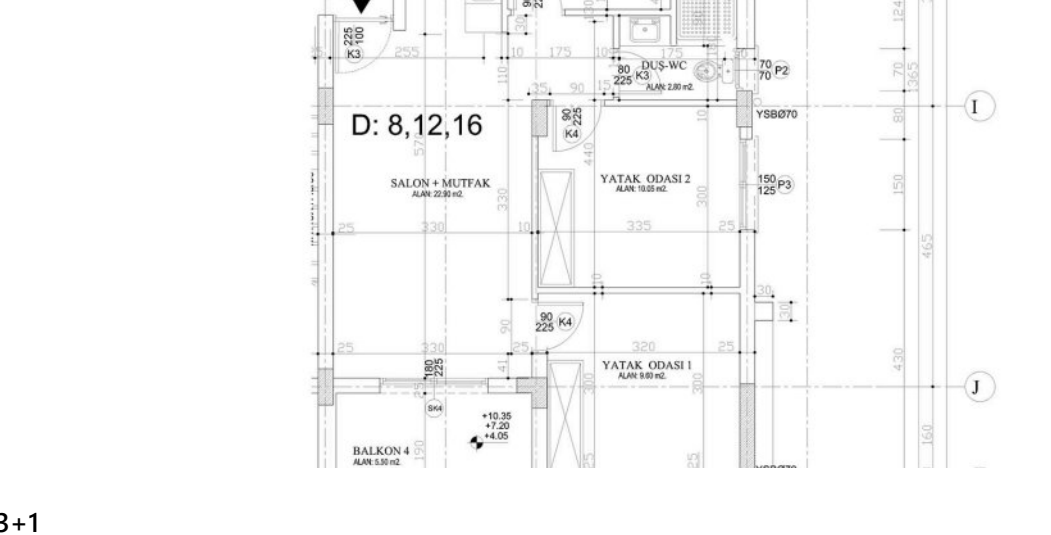
Plans



1+1



2+1



3+1

Payment plans

Deposit (non-refundable) Min 1000 GBP for 15 days

Option	Down payment	Installments months	Discount	Offer
Option 1	30%	40% till key, 30%...	-	-
Option 2	-	-	-	-
Option 3	-	-	-	-
Option 4	-	-	-	-

Special offer

Fully furnished design package

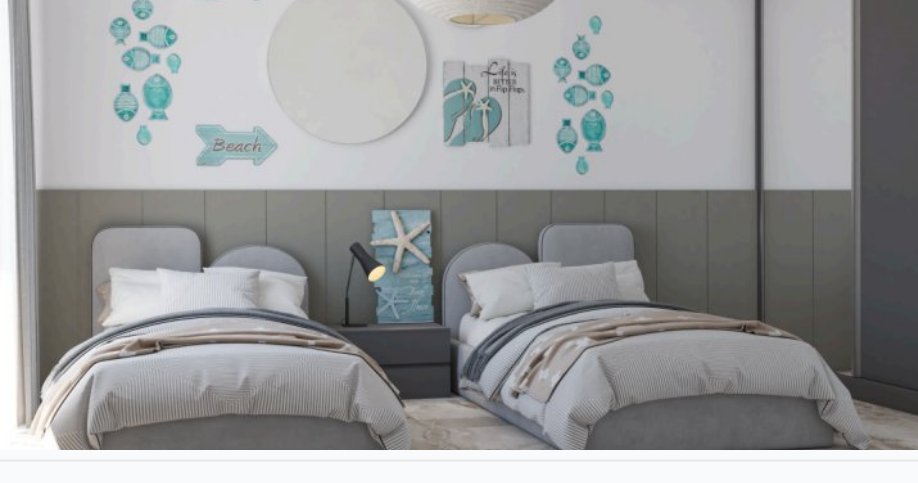
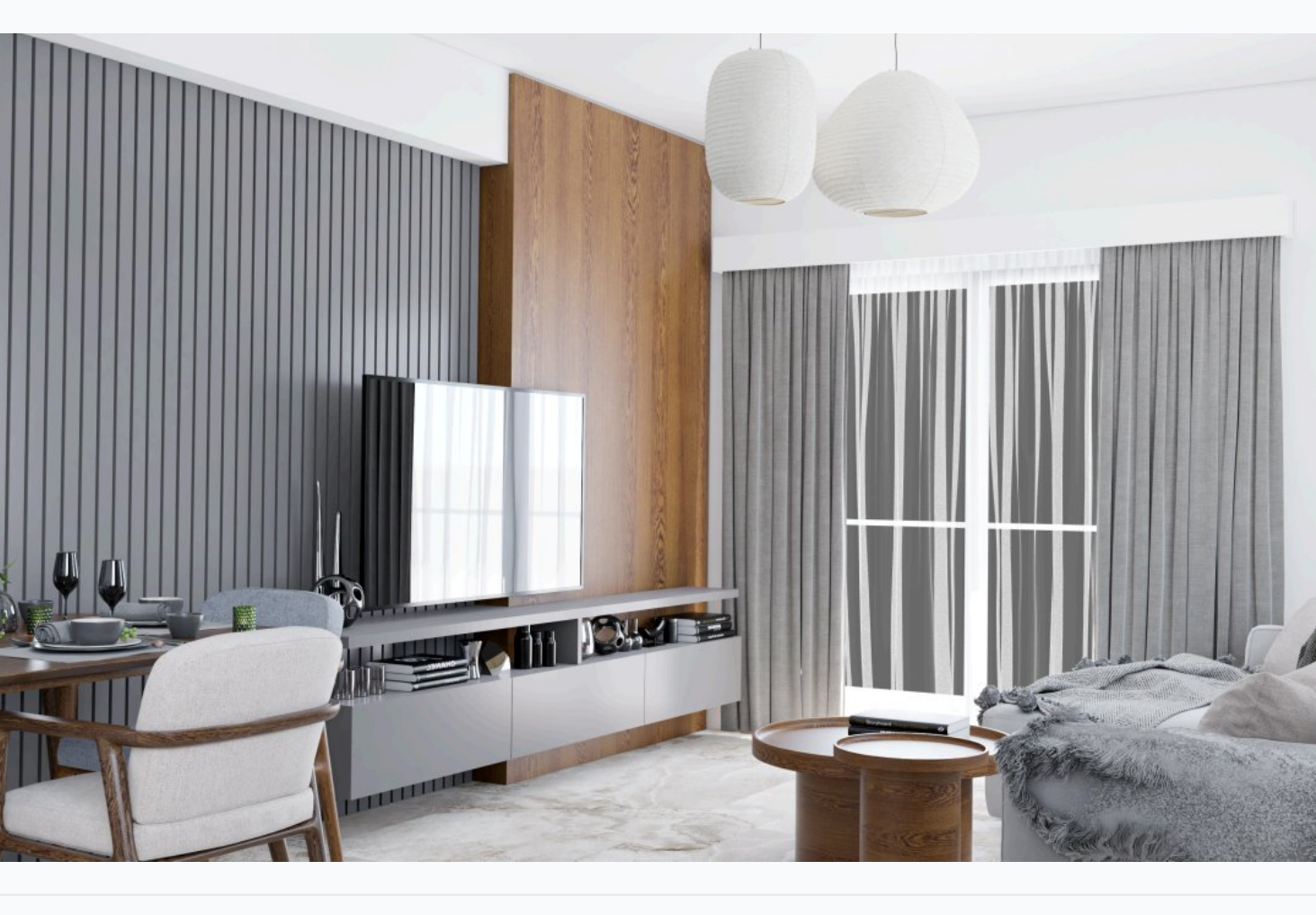
Rental guarantee

- Trafo 1800 GBP
- Resale -
- Maintenance fee 240-360 GBP annually
- Rental services -

Details

Bedrooms	Subtype	Block	Unit №	Floor	View	Bathroom	Internal area, sq. m	Balcony/ Terrace, sq. m	Rooftop terrace, sq. m	Garden, sq. m	Gross covered area, sq. m	Current price, GBP	Price per sqm, GBP
1+1	Flat	Daphne 2	29	03			54	6			60	76 000	1 267
1+1	Flat	Daphne 2	27	03			58	6			64	79 000	1 234
1+1	Flat	Daphne 3	4	0			54	6			60	73 500	1 225
1+1	Flat	Daphne 3	3	0			58	6			64	74 500	1 164
1+1	Flat	Daphne 3	6	0			58	6			64	74 500	1 164
1+1	Flat	Daphne 3	12	01			54	6			60	74 500	1 242
1+1	Flat	Daphne 3	20	02			54	6			60	75 500	1 258
1+1	Flat	Daphne 3	21	02			54	6			60	75 500	1 258
1+1	Flat	Daphne 3	19	02			58	6			64	76 500	1 195
1+1	Flat	Daphne 3	22	02			58	6			64	76 500	1 195
1+1	Flat	Daphne 3	28	03			54	6			60	76 500	1 275
1+1	Flat	Daphne 3	29	03			54	6			60	76 500	1 275
1+1	Flat	Daphne 3	27	03			58	6			64	77 500	1 211
1+1	Flat	Daphne 3	30	03			58	6			64	77 500	1 211
2+1	Flat	Daphne 1	42	06			84	44			128	168 000	1 313
2+1	Flat	Daphne 1	43	06			84	44			128	168 000	1 313
2+1	Flat	Daphne 1	41	06			78	54			132	156 000	1 182
2+1	Flat	Daphne 1	44	06			78	54			132	156 000	1 182
2+1	Penthouse	Daphne 2	35	04			84	44			128	168 000	1 313
2+1	Penthouse	Daphne 2	34	04			84	44			128	172 000	1 344
2+1	Penthouse	Daphne 2	36	04			78	54			132	156 000	1 182
2+1	Penthouse	Daphne 3	34	04			84	44			128	168 000	1 313
2+1	Penthouse	Daphne 3	35	04			84	44			128	172 000	1 314
2+1	Penthouse	Daphne 3	33	04			78	54			132	156 000	1 182
2+1	Penthouse	Daphne 3	36	04			78	54			132	160 000	1 212
2+1	Flat	Jasmine 1	16	03			79	7			85	88 000	1 035
2+1	Flat	Jasmine 1	21	04			79	7			85	89 000	1 047
2+1	Flat	Jasmine 1	26	05			66	7			73	81 500	1 116

Interior specification



- Ceramic flooring
- Double glazed windows
- Laminate flooring in the bedrooms

Exterior specification



Location of complex

